



Asia Technology Conference

September 07, 2012



Company Overview

- **Founded in 1988**
- **HQ in Taipei, Taiwan**
- **13 offices in 8 countries**
- **Went public in Taiwan in May 2001**
- **Taiwan's Top 20 global brands**
- **2400+ employees worldwide**



Worldwide Offices / Factories



Consolidated Income Statement

Unit: NTDS\$ million (Except EPS)

	2Q12		1Q12		QoQ	2Q11		YoY
	Amount	%	Amount	%	%	Amount	%	%
Sales	6,064	100.00	6,198	90.53	-2.16	6,846	100.00	-11.42
Cost of goods sold	4,898	80.77	5,084	74.26	-3.66	5,741	83.86	-14.68
Sales Margin	1,166	19.23	1,114	16.27	4.67	1,105	16.14	5.52
Operating Expenses	367	6.05	353	5.82	3.97	384	6.33	-4.43
Operating Income	799	13.18	761	11.12	4.99	721	10.53	10.82
Non-Operating Income	76	1.25	(69)	-1.01	-210.14	(72)	-1.05	-205.56
Income Before Tax	875	14.43	692	10.11	26.45	649	9.48	34.77
Net Income	719	11.86	617	9.01	16.53	529	7.73	35.79
Earnings Per Share	1.67		1.43		16.78	1.24		34.68

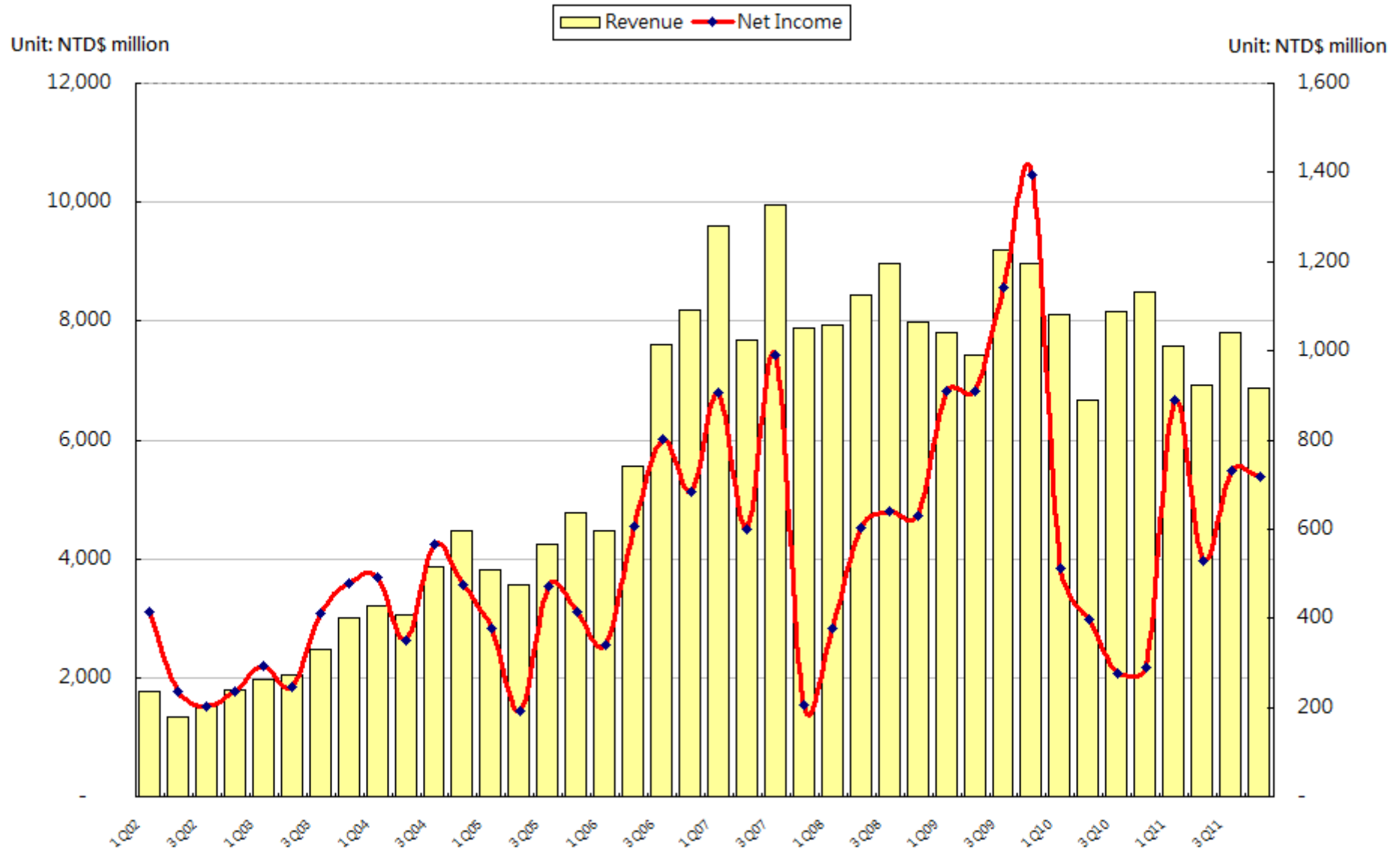
Consolidated Balance Statement

Consolidated Balance Sheet

Unit: NTD\$ million

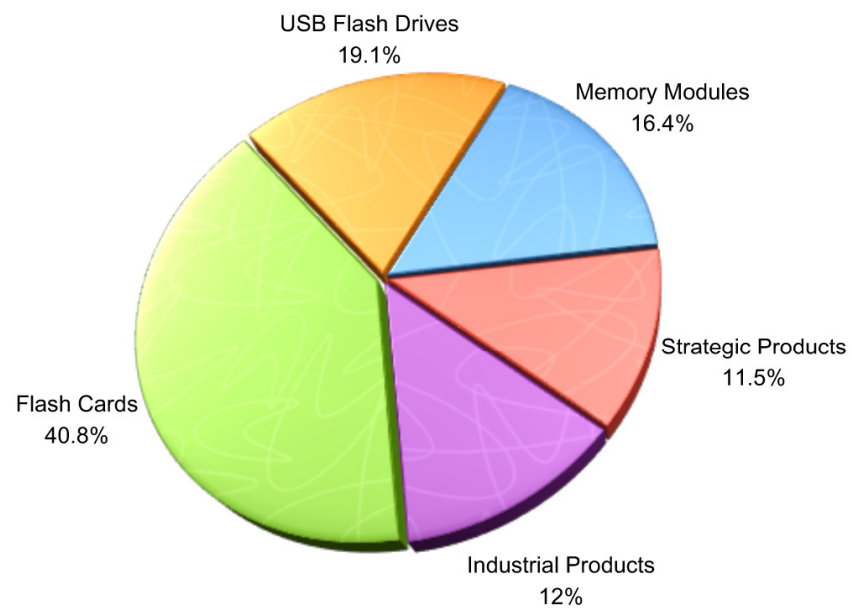
	2Q12		1Q12		2Q11	
	Amount	%	Amount	%	Amount	%
Total Assets	23,361	100.00	22,303	100.00	20,866	100.00
Current Assets	18,613	79.68	17,493	78.43	15,999	76.67
Cash and Marketable Securities	10,508	44.98	10,447	46.84	7,464	35.77
Accounts Receivable	2,607	11.16	2,264	10.15	2,856	13.69
Inventory	4,231	18.11	3,794	17.01	4,909	23.53
Fixed Assets	3,751	16.06	3,784	16.97	3,887	18.63
Total Liabilities	5,381	23.03	2,669	11.97	3,720	17.83
Current Liabilities	5,036	21.56	2,328	10.44	3,438	16.48
Accounts Payable	1,812	7.76	1,228	5.51	1,018	4.88
Total Shareholder's Equities	17,980	76.97	19,634	88.03	17,146	82.17

Revenue & Net Income Quarter by Quarter

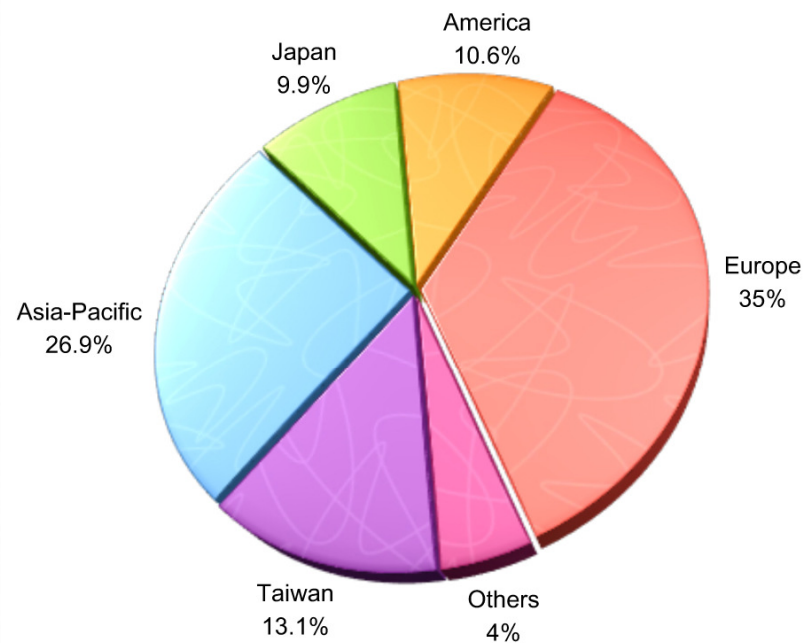


2012 H1 Revenue Distribution

Breakdown by Product

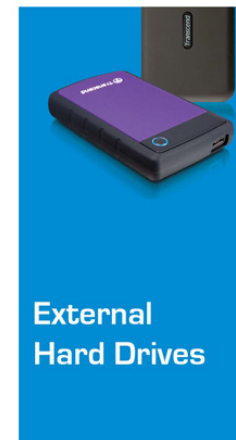
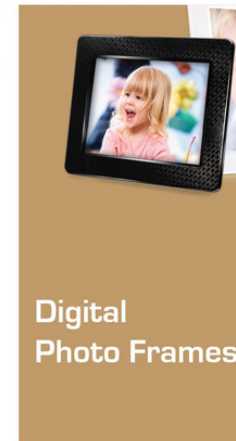
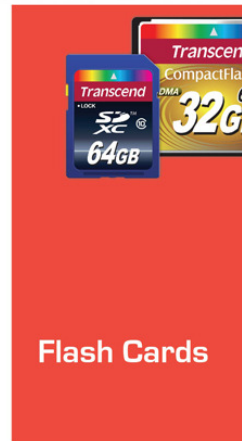


Breakdown by Region



Product Portfolio

•100% compatibility, stability and reliability



The One Stop Shop

Multimedia Devices



IT Components



Storage Devices

